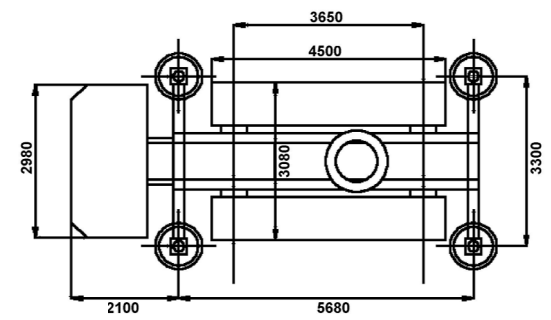


Transport width - 3080mm
 Total ballast - 15000kg
 Central ballast - 5000kg
 Max. travelling speed 15m/min.
 Max. operating temperature -20° to 40° C



		Outrigger pad size	500mm x 500mm	Maximum outrigger load	19,000kg
Transport weight	45000kg	Necessary electric power	380 V 50 Hz	Mains supply	22 kVA 50 A
Maximum ground bearing pressure under tracks	0.65 kg/cm ²	Cable size	0 - 50m 4 x 16mm ²	Generator set	46 kVA 50 A